

NEWS LETTER

JULY 2006
 Issue :CL/NL005/2006
 Edited :R&D DEPT
 Design :CHEE

Company Overview

Consolidated Laboratory (M) Sdn Bhd is a full service analytical laboratory, offering a wide range of testing services in the areas of the environment, microbiology, food chemistry, palm oil, pesticides, chemical solvent and pharmaceutical products. Our laboratory is run by a team of qualified chemists and well experienced supporting staff, so as to ensure that the client's needs are met with complete satisfaction. We have often carried out quality assurance programs so as to achieve an analytical precision and accuracy and at the same time to help us to meet the requirements by the Department of Standard Malaysia (DSM) over a wide range of tests. Since its incorporation in 1977, Consolidated Laboratory has grown to become one of the well established private laboratories.

In line with our expansion program, Consolidated Laboratory has teamed up with Cantest Ltd., our overseas joint venture partner based in Canada. Cantest Ltd. is a full service analytical laboratory offering a myriad of testing including environment, industrial, clinical and veterinary fields and employs ICAP, GC/MS, LC/MS and ICP/MS. As such, Consolidated Laboratory is capable of providing laboratory services in geographical areas in Malaysia, Asia Pacific and throughout North America.



Services

- Analysis of Nutritional Labeling.
- Analysis of Antibiotics, Preservatives, Heavy Metals & Bacteriological in Meat and Seafood Product
- Analysis of Heavy Metals, Steroids in Herbal and Traditional Preparation and Health Care Products
- Halal Analysis for Certification of Food Products and Cosmetic & Toiletries products
- Pesticide & Herbicide Residue Analysis in Vegetables and Fruits
- Analysis of Minerals, Preservatives, Colouring and Artificial Sweetener in Food and Beverages.
- Benzopyrene determination in Fried and Barbecued Food.

For more information, please enquire by contacting our personnel for assistance:

KUALA LUMPUR
 Head Office
 No.2-3 BEDFORD BUSINESS PARK,
 JALAN 3/137B, BATU 5,
 JALAN KELANG LAMA,
 58000 KUALA LUMPUR,
 MALAYSIA
 Tel : (603) 7981-0978
 Fax : (603) 7981-0763
 E-mail :consolab@tm.net.my
 Website:www.consolab.com

Mr. Alan Lee
 Marketing Manager
 H/P:(6019) 6635-154

Ms. Jeanly Lee
 Marketing Executive
 H/P: (6012) 3676-723

Ms. Lim
 Customer Service
 H/P: (6012)-3596 812

PENANG & NORTHERN REGION
 3-27-B,NB PLAZA,
 3000 JALAN BARU,
 13600 PRAI,PENANG,
 MALAYSIA.
 Mr. Chin
 Marketing Executive
 H/P: (6012) 571-7227
 Tel : (604) 3975-827
 Fax : (604) 3975-714

MELAKA & SOUTHERN REGION
 Mr. Desmond Chew
 Marketing Executive
 H/P : (6019) 666-4585
 Fax : (606) 232-1832

PERAK
 Mr. Chin
 Marketing Executive
 H/P : (6012) 571-7227

Methodology

All testing is performed by Approved Methods of recognized sources includes:

- American Public Health Association (APHA)
- Association of Official Analytical Chemist (AOAC)
- American Society for Testing and Materials (ASTM)
- American Oil Chemists Society (AOCS)
- American Association of Cereal Chemists (AACC)

Accreditation

Consolidated Laboratory is accredited under ISO/IEC17025 by the Department of Standards Malaysia (DSM) for the analyses of all types of Food, Water, Palm Oil etc.



BREAKING NEWS!!!

Laboratory Technology

The high-tech real time PCR in Consolab is not only capable of certifying present of pork origin, it is also capable of identifying present of other vertebrate species covering cow, chicken, turkey, sheep, goat, rabbit, horse, dog, cat, human and goose



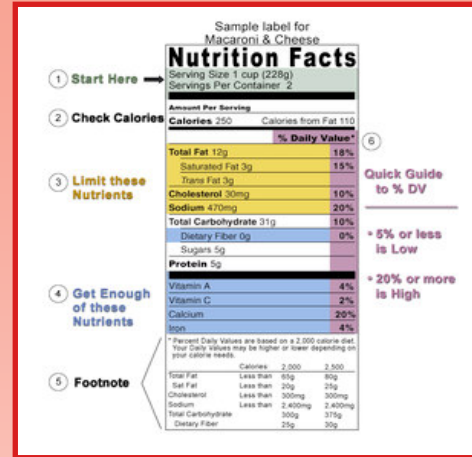
NUTRITION FACTS

The nutritional facts label (also known as the nutrition information panel, and various other slight variations) is required on most pre-packaged foods in North America, United Kingdom and other countries.

The Nutrition Labelling Act, initiated by Ministry of Health Malaysia in 2003, states that food producers and importers are required to include a specific list of 'nutrition facts' on product labels in a pre-defined format. By September 15, 2005 all, except a limited number of food products, will require nutritional facts labels on consumer packages.

Consolab food chemists and technical staff have vast experiences in helping clients meet the mandatory Malaysia standards. We are accredited by Department of Standard Malaysia under ISO/IEC 17025 for analysis of mandatory nutritional parameters. As part of our Nutritional Labelling service, we also include an accurate mock-up label in a Ministry of Health Malaysia approved format suitable for use on product packaging.

Apart from nutrition labelling of Malaysian requirement's we are also capable of testing food and beverage products for labelling requirements in other jurisdictions. Are your products labelled? Is your company comply with the following regulations?



USRDA

United States

A sample Nutrition Facts label, color-coded to help explain its parts. In the U.S., the nutritional facts label lists the percentage supplied required in one day of human nutrients. In certain cases this label is not yet required by law, so a list of ingredients should be present instead. Ingredients are listed in order of most common to least common. The label begins with a standard serving measurement, calories are listed second, and then following is a break down of the constituent elements. Also listed are fat, carbohydrates and protein, then usually cholesterol and sodium, and then sometimes vitamins and minerals (trace elements).

Australia

Nutrition Information Requirements in the *Australia New Zealand Food Standards Code* requires nutrition information on most food labels. This information is to enable consumers to have an informed choice about the nutritional content of the food they eat. Information on the level of energy, protein, total fat, saturated fat, carbohydrate, sugar and sodium must be displayed in the form of a nutrition information panel.

United Kingdom

In Britain, the panel does not have a standard format, but is most often labelled "Nutrition Information". It will always give values for a set quantity (usually 100g or 100ml as appropriate) of the product, and often also for a defined "serving". First will come the energy values, in both Calories and kilojoules, although the metric measurement is still little used by the general public. Then will come a breakdown of constituent elements: usually most or all of protein, carbohydrate, starch, sugar, fat, fibre and sodium. The "fat" figure is likely to be further broken down into saturated and unsaturated fat, while the "carbohydrate" figure is likely to give a subtotal for sugars.

Malaysia

- Energy
- Carbohydrate
- Total Sugars#
- Protein
- Fat
- # For direct consume readied to drink beverage/product only

FAKTA NUTRISI / NUTRITION FACTS		
	Setiap/Per 100g	Setiap Hidangan/Per Serving 500mg
Tenaga/Energy	400kkal/kcal	2,000kkal/kcal
Lemak/Fat	2.0g	10.0g
Karbohidrat/Carbohydrate	36.9g	184.5g
Protin/Protein	58.7g	293.5g



Purpose of Analysis:

To comply with regulatory requirements.

Methodology:

Analytical methods employed at Consolidated Laboratory have been adopted from recognized official sources and validated internally.

Instrumentations:

HPLC, UV-VIS Spectrophotometrics, GC, AAS, ICP-OES, and etc.

With the above state-of-the-art modern technologies and more importantly the highly qualified and experience laboratory analysts and supporting staff, we in Consolab could offer you the above testing solutions. For enquiries kindly contact us.

Your One Stop Testing Solutions