

# CONSOLIDATED LABORATORY(M) SDN BHD



## COMPANY PROFILE

### CONSOLIDATED LABORATORY (M) SDN BHD

**KUALA LUMPUR**

Head Office

No.2-3 BEDFORD BUSINESS PARK

JALAN 3/137B, BATU 5

JALAN KELANG LAMA

58000 KUALA LUMPUR, MALAYSIA

Tel : (603) 7981-0978

Fax : (603) 7981-0763

E-mail : [consolab@tm.net.my](mailto:consolab@tm.net.my)

Website: [www.consolab.com](http://www.consolab.com)



**CONSOLAB**

# CONSOLIDATED LABORATORY(M) SDN BHD

## CONTENTS

	Page
Overview of Company	1
Joint-Venture Partner	1
Organization Chart	2
People and Expertise	3
Key Technical Personnel Biography	3
Quality System	7
Accreditation	7
Methodology	8
Laboratory Information Management System (LIMS)	8
Major Equipment	9
Customer Reference	10



# CONSOLIDATED LABORATORY(M) SDN BHD

Page 1 of 9

## Overview of Company

**Consolidated Laboratory (M) Sdn Bhd** is a full service analytical laboratory, offering a wide range of chemical and microbiological testing services in the areas of the environment, food, palm oil and pharmaceutical.

Since its incorporation in 1977, Consolidated Laboratory has grown to become one of the well established private laboratories.

Our mission is to be the leading science based provider of solution in diversified field of testing.

Consolab is run by a team of qualified chemists and well experienced supporting staff and in essence with the state-of-the-art instrumentation and infrastructure, Consolab is able to ensure that the client's needs are met with complete satisfaction.

We have often carried out quality assurance programs so as to achieve an analytical precision and accuracy and at the same time to help us to meet the requirements by the Standards Malaysia (DSM) over a wide range of tests.

## Joint-Venture Partner

In line with our expansion program, **Consolidated Laboratory** has teamed up with **Cantest Ltd.**, our overseas joint venture partner based in Canada.

Cantest Ltd. is a full service analytical laboratory offering a myriad of testing including environment, industrial hygiene, food, biotechnology, pharmaceutical, clinical and veterinary fields and it employs state-of-the-art technology including ICAP, GC/MS, LC/MS and ICP/MS.

As such, Consolidated Laboratory is capable of providing laboratory services in geographical areas in Malaysia, Asia Pacific and throughout North America.

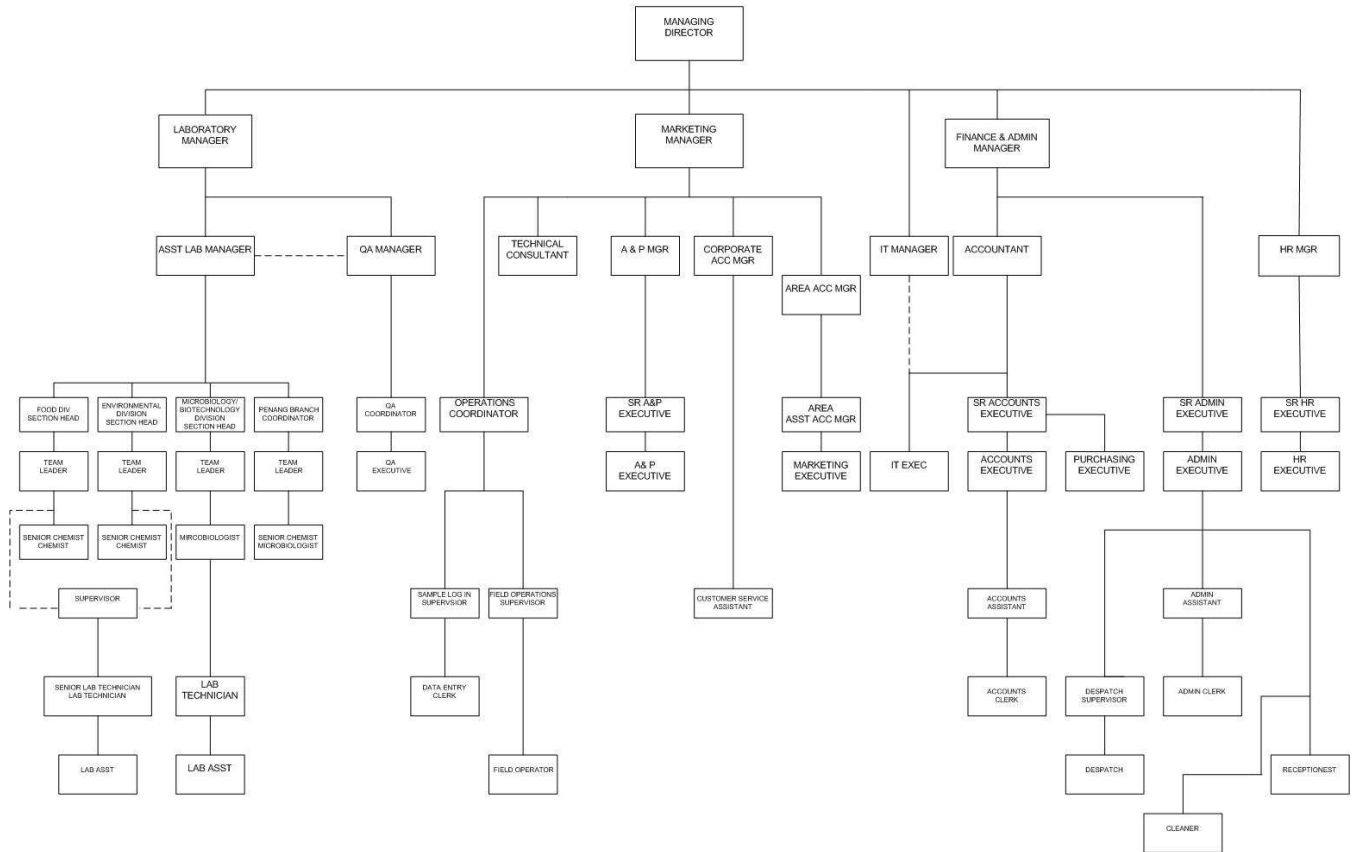


CONSOLAB

# CONSOLIDATED LABORATORY(M) SDN BHD

CONSOLIDATED LABORATORY (M) SDN BHD  
LABSERVICE (M) SDN BHD

## ORGANISATION CHART



Updated on 05/05/2010



**CONSOLAB**

## People & Expertise

**CONSOLAB** Laboratory Operations consists of the Chemical and Microbiology Division. The Laboratory Operations is led by Laboratory Operations Manager and supported by Laboratory Manager, QA Coordinator, R & D Coordinator, respective Laboratory Coordinators, Team Leaders, Chemists, Microbiologists, Technicians, Sample Logistics personnel, Marketing and Account Manager.

Staff members at Consolab are highly qualified, with post-graduate and undergraduate academic degrees and/or diplomas in related fields, with extensive research and analytical experience in areas of food, environment, palm oil, pharmaceutical and nutraceutical.

## Key Technical Personnel Biography

### **KHOO CHENG SEANG**

MANAGING DIRECTOR

#### **EDUCATION**

Bachelor of Science (Chemistry) - Monash Univeristy, Melbourne, Australia.  
Diploma in Applied Chemistry – Swinburne University of Technology, Australia.

#### **PROFESSIONAL MEMBERSHIP AND AFFILIATION**

Member of Royal Australian Chemical Institute  
Associate Member of Chemical Institute Malaysia  
Associate Member of Palm Oil Refinery Association Malaysia

#### **EXPERIENCE**

*LABORATORY MANAGER (1973- May, 1977)*

In this capacity, Khoo was responsible for overseeing all operational activities of the laboratory.

*CONSOLIDATED LABORATORY (M) SDN. BHD. (July 1977 - Present)*

*MANAGING DIRECTOR (July, 1977 - Present)*

Since the formation of Consolidated Laboratory, Khoo had been managing the laboratory. Under his management, the company has expanded from a small size to a medium size-testing laboratory. He now directs the overall activities which include environmental, food and industrial section. In addition to formulating all operating budgets and capital expenditures, he is responsible for strategic planning and all aspects associated with business development.



# CONSOLIDATED LABORATORY(M) SDN BHD

Page 4 of 9

## **DON M. ENNS**

CANADIAN ASSOCIATE PARTNER  
**PRESIDENT & GENERAL MANAGER, CANTEST, CANADA.**

### **EDUCATION**

Master of Business Administration - UBC (1987)  
Bachelor of Science (Chemistry) - Trinity Western University (1982)

Specialized Training

Waste Water Treatment Plants - California State University (1987) Canadian Securities Institute (1989)

### **PROFESSIONAL MEMBERSHIPS AND AFFILIATIONS**

Air and Waste Management Association  
American Water and Waste Association American Society of Testing Materials  
Canadian Water and Wastewater Association  
Canadian Institute of Public Health Inspection  
Canadian Association for Environmental Analytical Laboratories  
National Environmental Health Association

### **EXPERIENCE**

#### ***CANTEST LTD. (1982 - Present)***

##### ***PRESIDENT & CEO (Sept. 1991- Present)***

Don directs the activities of all departments, which include toxicology, food products, industrial hygiene and industrial chemistry. In addition to formulating all operating budgets and capital expenditures, he is responsible for strategic planning and all aspects associated with business development.

#### ***MANAGER (1988- AUG. 1991)***

##### **ENVIRONMENTAL LABORATORY**

In this capacity, Don was responsible for overseeing all operational activities associated with the environmental group at CANTEST. Management of these multi-departments and projects has provided him with significant exposure to environmental legislation and monitoring requirements.

#### ***SUPERVISOR (1983-1987)***

As supervisor, Don has not only taken on the responsibilities of developing new procedures and techniques, but also those directing and managing environmental impact studies and large interdisciplinary projects. He is also responsible for supervision of staff, establishing quality control guidelines, and any report generation that is deemed necessary.



**CONSOLAB** —

# CONSOLIDATED LABORATORY(M) SDN BHD

Page 5 of 9

## **CHEMIST (1982-1983) - ENVIRONMENTAL LABORATORY**

As a chemist, Don's primary responsibilities included the analysis of environmentally sensitive samples. Parameters such as dissolved anions, trace metals, nutrients, trace organics and physical tests were analyzed by either wet classical techniques or automated instrumentation. More specifically, some of the project Don was involved with include:

- Survey of toxic elements in gold mill effluent.
- Experimental fertilization program carried out in numerous fresh water bodies throughout British Columbia.
- Environmental impact assessment for mine. A unique QC program was also implemented.

## **TECHNICAL PAPERS AND PRESENTATIONS:**

In addition to acting as a guest lecturer at a numerous local colleges and universities, Don has presented the following papers:

Canadian Accreditation Update. D.M.Enns, IAETL Eighth Annual Conference, Tucson, Arizona, September 26, 1996.

Food Quality and Safe Issues. D.M.Enns. Clinical Laboratories Annual Spring Conference, Vancouver, B.C., May 4, 1995.

Procedures for Classification of Hazardous Waste. D.M.Enns, R.S.Jorntz, Waste Seminar, Vancouver, B.C., February 26, 1991.

Implications of Regulations: Commercial Laboratory. D.M.Enns BCWWA/ Ministry of Environment Workshop, February 7, 1990.



CONSOLAB

## Quality Systems

To ensure that our results are above legal reproach, all aspects of analysis are performed in accordance with the policies and procedures of an extensive Quality Assurance / Quality Control program. **CONSOLAB** has a full time Group Quality Manager and QA unit whose responsibilities are independent from data generation activities.

## Accreditation

**CONSOLAB** is formally accredited by Standards Malaysia for SAMM Scheme, equivalent to ISO/IEC 17025.

We are also Approved Laboratory for performing analysis for issuance of Health Certificate and Free Sale Certificate by Ministry of Health.



## Methodology

Analytical methods employed at Consolab are adopted from recognized sources. Some of these sources include:

APHA- American Public Health Association  
AOAC- Association of Official Analytical Chemists  
AOCS – Association Oil Chemists Society  
AOCC- Association of Official Cereal Chemists  
ASTM- American Society for Testing and Materials  
NIOSH- National Institute of Occupational Safety and Health  
USEPA- United States Environmental Protection Agency  
USP – United States Pharmacopeia  
BP – British Pharmacopoeia  
AS-Australian Standard

Test methods are prior verified upon adopt for routine use by ours R & D division.

Test methods routinely used in the laboratory are written as Standard Operating Procedures (SOPs), which cover:

### Sample handling and storage requirements

- Analytical method
- Quality Control
- Safety
- Instrument maintenance and calibration
- Quality Control acceptance and rejection criteria related to the method

In case when method are not yet available, the Quality Assurance Unit and our R&D division will work closely with our Laboratory Operations Manager in developing, validating and implementing a new procedure in order to satisfy the requirements.

## Laboratory Information Management System (LIMS)

The Laboratory Information Management System (LIMS) handles the majority of the sample log-in, scheduling, QC validation, reporting and invoicing tasks for the laboratory.



## Major Equipment

LC-MS-MS  
ICP-MS  
ICP-OES  
AAS-Hydride generation system  
AAS  
GC-MS  
GC-FID  
GC-ECD  
GC-NPD  
HPLC-UV  
HPLC-Fluorescence  
HPLC-PDA  
HPLC-RID  
IC  
FT-IR  
UV-vis Spectrophotometer  
Real-Time PCR

